

# BACK-TO-SCHOOL BOOKLET

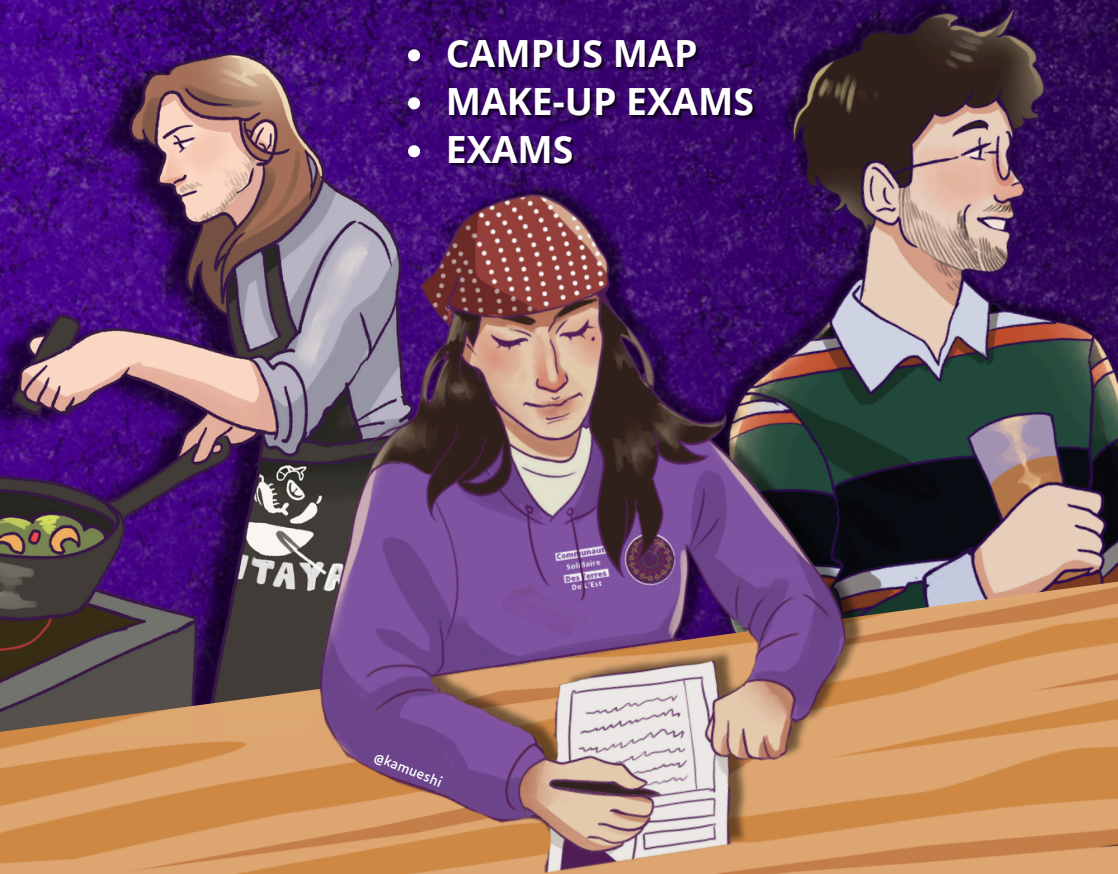
2025/2026 – COLMAR



- SCHOLARSHIPS
- STUDENT JOBS
- STUDENT RIGHTS

- REGISTRATION
- STUDENT LIFE
- ACCOMMODATION

- CAMPUS MAP
- MAKE-UP EXAMS
- EXAMS



[contact@cste68.fr](mailto:contact@cste68.fr)



[cste68.fr](http://cste68.fr)



# CSTE, THE STUDENT UNION FOR STUDENTS, BY STUDENTS

## WHO ARE WE?

The CSTE, or Communauté Solidaire des Terres de l'Est, is a student union that is separate and independent from any institution. We are not a service of the University or the Crous. The CSTE is composed exclusively of students, all of whom are volunteers. Our mission is to represent, support, defend, and inform all students in the department, whether they are at the University, Praxis, Hear, IFSI, high school, or any other institution.

Throughout the year, we are committed to using all the tools at our disposal to advocate for better conditions for current and future students.

## OUR PROJECT



The CSTE advocates for a solidary, inclusive, and democratic society. In this sense, we fight for free university education, capable of welcoming young people without selection, and of empowering our generation, for a university that does not tolerate discrimination or sexist and sexual violence within its walls. To this end, the CSTE fights throughout the year, both within councils with our elected representatives from the "L'Alternative Écolo et Solidaire" list and outside of them, in the social movement and through our solidarity actions on the ground.

## OUR ACTIONS IN THE FIELD

F- Free food distributions, with no strings attached, of dry goods and organic vegetables supplied by local farmers.

- Free distribution of menstrual underwear to combat period poverty and taboos.
- Festive and solidarity events to enable everyone to socialize without breaking the bank or putting themselves at risk (with Safe Team).
- Regular office hours on campuses to support and inform students about their rights.



## A WORD FROM THE PRESIDENT

*Welcome to higher education,*

Whether through this booklet, our actions, or even when we bump into you in the hallways, our top priority is to help and support you as you navigate the obstacles of student life: financial insecurity, housing, student rights, etc. But the CSTE is more than that; it is also a place for exchange, training, sharing, and above all, a place for students to organize and stand together as a bulwark against liberal and reactionary attacks.

Take advantage of these years to get involved, because university isn't just about classes, it's also about developing your critical thinking skills through engagement and openness to others, so join us to gain new rights: it's the first step to changing things!

Manon DENIZOT  
President of the CSTE



## COMMENT NOUS REJOINDRE

You can join us for as little as €3, regardless of your field of study or availability. Membership can be obtained in person or online (on our website ([cste68.fr](https://cste68.fr)) or via the QR code at the end of the booklet).



# SUMMARY

3

## FREQUENTLY ASKED QUESTIONS

STUDENT CARD



RESTAURATION



ADDITIONAL FEES



TRANSPORTS



DEVELOPMENT  
COMMITMENT



REORIENTATION



INTERNATIONAL  
STUDENTS



PARKINGS

5

## FINANCIAL ASSISTANCE AND PRECARIOUSNESS



SCOLARSHIP



€ MEAL



EMERGENCY  
AID



ANNUAL  
SPECIFIC AID

SCOLARSHIP  
UPDATE



LABOR  
LAW



MOBILITY  
AID



REFUND  
REGISTRATION FEES



7

## CAMPUS MAP



GRILLENBREIT



BIOPÔLE

9

## FINANCIAL ASSISTANCE FOR HOUSING



PERSONALIZED  
HOUSING ASSISTANCE  
(APL)



HOUSING ASSISTANCE  
WORK-STUDY  
PROGRAM



LES HERBERG'  
CROUS



VISALE DEPOSIT



HOUSING LAW  
SUPPORT

10

## STUDENT LIFE CULTURE, SPORT, ETC

CULTURE CARD



THE BVE



THE CLOUS



SPORTS  
PASS



SUAPS



SUAC



JEUN'EST



11

## HEALTH AT UNIVERSITY

HEALTH HAS A PRICE



HEALTH SERVICE



DISABILITY  
FACILITIES



MENTAL HEALTH  
MENTAL VOUCHER

SOCIAL  
SECURITY



SUPPLEMENTARY HEALTH  
INSURANCE (MUTUAL  
INSURANCE)



SOLIDARITY-BASED  
SUPPLEMENTARY  
HEALTH INSURANCE



13

## EDUCATION AT UNIVERSITY



UNIVERSITY  
SYSTEM



OPEN  
MODULES



EXAMS



COMPENSATION



EXAM RETAKE

2

# FREQUENTLY ASKED QUESTIONS

## WHAT CAN I USE MY STUDENT ID CARD FOR?

- It is your means of payment in CROUS catering establishments (Cafèt', University Restaurant, Crous&Go'), for vending machines, and for printers.
- It is your campus pass, your means of identification during exams or to enter certain buildings (Learning Center, Student Union, etc.).
- It is also your Culture Card, which works via a small sticker attached to it, allowing you to take advantage of a number of cultural promotions in Alsace.

Don't worry, you will receive it at the beginning of the year. In the meantime, download the Izly app to pay for various services.

## HOW CAN I EAT WITHOUT BREAKING THE BANK?

*In these dining facilities, you can only pay via Izly (with your student card or the app), except in Cafet' cafeterias, where you can pay by credit card.*

*CROUS dining facilities are open to all students, even those who are not enrolled at UHA.*

- University Restaurants (RU): Here you will find full meals (starter, main course, dessert) for €3.30 (non-scholarship recipients) or €1 for those who are eligible.

*Please note that there is only one cafeteria in Colmar, at Grillenbreit. A shuttle bus runs between Biopôle and Grillenbreit during lunchtime.*

- Cafés: Here you will find menus either at student prices (sandwiches, desserts, drinks) or outside the criteria, with sandwiches, pasta boxes, desserts, and drinks.

*There is only one in Colmar, on the Grillenbreit campus.*

- Crous&Go': You can pick up a full meal (starter, main course, dessert) at the Crous rate (€3.30 for non-scholarship holders and €1 for scholarship holders) that you ordered the day before, in a CROUS glass box (please note that you will have to pay for it the first time). To use it, you need to create a Crous&Go' account and link it to your Izly account ([strasbourg.crousandgo.fr](https://strasbourg.crousandgo.fr)).

*The collection points are located at the Grillenbreit university restaurant. It is possible to collect a second meal for the evening (to be collected during lunchtime).*

Cafeterias affiliated with the Crous. You can eat there at Crous prices (€3.30 or €1): the Blaise Pascal high school in Colmar and the Jean Mermoz high school in Saint-Louis

## DO I HAVE TO PAY THE ADDITIONAL FEES?

No, additional fees are optional fees that you can pay either when you register or at the beginning of the year. They give you access to printing credits, certain equipment, training, and even certain rooms at certain times. They are optional and vary depending on the department (IUT, faculty, school), and some departments, such as FSESJ, do not have them at all.





# ALL THE BASIC QUESTIONS ABOUT UNIVERSITY LIFE

## TO GET AROUND, DO I HAVE TO SELL MY KIDNEY?

Various discount rates are available:

- Fluo Youth Card: €1 for those under 26 (€20 otherwise): 50% off TER/Car Fluo Grand Est.
- TGV Youth Card: €49 (often with 50% off, Black Friday, back-to-school deals): 25% off your trips.
- Transport Trace (Colmar) fare for ages 5–25: €17/month, €170/year.
- Transport Tram/Bus Soléa (Mulhouse): fare for under-26s €21/month €199/year
- Simplicity card (free): allows you to load a weekly or monthly TER pass combined with bus/tram travel. Prices vary depending on the options chosen; see the SNCF Connect app for details.

## CAN I PARK FOR FREE ON MY CAMPUS?

Most campuses have free parking nearby. This is the case for Grillenbreit, thanks to the Grillen car park, which can accommodate up to 250 cars and has direct access to the campus. The same applies to Biopôle, which has a sufficient number of parking spaces.

## FINALLY, I WANT TO CHANGE DIRECTION. HOW DO I GO ABOUT IT?

You can make an appointment with the SIO (bat B - Information and Guidance Service) to discuss this. The SIO ([sio@uha.fr](mailto:sio@uha.fr)) is also there to:

- help you find an internship or work-study program
- provide information about continuing your studies
- help you prepare for job interviews, write your resume, and compose your cover letter
- support you if you are a self-employed entrepreneur

## I AM AN INTERNATIONAL STUDENT, I AM IN TROUBLE, WHO SHOULD I SEE?

You can check with the Student Life Office, which is responsible for supporting international students.

**Contact email address:** [bve@uha.fr](mailto:bve@uha.fr)

On site: Student Center, ground floor, Illberg Campus (Mulhouse), or meet in Colmar (building B) after contacting us by email.

**Want more info? Find the CSTE's thematic booklet on the subject using the QR code at the end.**

## I AM A WORKING STUDENT, PARENT, PREGNANT, OR OTHER. AM I ENTITLED TO ACCOMMODATIONS?

The University offers what are known as special study arrangements (RSE). These allow courses to be adapted for people who need them: working students (working at least 10 hours per week), students who are parents or pregnant, high-level athletes, artists, students with disabilities, reservists, students involved in military service, etc.

In this context, you can consult with your program director regarding adjustments to attendance rules, grading methods (switching from continuous assessment to final assessment), etc.

*If you have a commitment during the academic year (e.g., social club, representative role, etc.), you can put together a student commitment file at the IUT, which may allow you to earn extra points toward your grade point average. Contact the IUT or department office to obtain the file.*

# FINANCIAL ASSISTANCE

## FOCUS ON SCHOLARSHIPS



**1 IN 2** student  
*experienced difficulties in obtaining  
food in 2023 in the Grand Est  
region*

### SCHOLARSHIPS BASED ON SOCIAL CRITERIA:

Available to French students and, under certain conditions, foreign students in initial training, these grants are managed by the CROUS (or the Grand Est region for health and social care training). The grant is generally paid monthly over 10 months (from September to June).

Scholarship recipients are exempt from certain registration fees and the CVEC student tax, and are entitled to meals for €1 in CROUS restaurants.

→ Online application (Student Social File) to be completed on the website:  
[messervices.etudiant.gouv.fr](https://messervices.etudiant.gouv.fr) or [boursesanitaireetsociale.grandest.fr](https://boursesanitaireetsociale.grandest.fr) (before September 30)

#### → **Criteria for obtaining a social criteria scholarship:**

The income of the legal guardian(s) (the student's direct income, whether poor or rich, has no impact on obtaining the scholarship).

The distance between the place of study and the family home.

- The number of siblings studying in higher education.

#### → **The impact of repeating a year on your scholarship:**

You are entitled to a scholarship for seven years.

A maximum of five years for a bachelor's degree (two in the first year, so if you repeat a year, you keep your scholarship). If you repeat three years, you lose your scholarship, but you get it back if you complete a year.

A maximum of 3 years for a master's degree.

If you use up 5 years of scholarship during your undergraduate studies, you only have 2 years left for your master's degree.

**In the case of disability, the criteria are different. Please consult with the disability mission.**

### ANNUAL SPECIFIC AID

**45%** *Scholarship recipients  
receive less than €220 per  
month.*

Available to students in difficulty who do not meet the criteria for the scholarship but who meet the nationality criteria for the social criteria scholarship. It provides assistance in cases of family breakdown, financial independence from your parents, resumption of studies, or other special situations, and gives the same rights as the scholarship.

**The procedure must be carried out with a social worker from the CROUS.**

### ARE YOU BECOMING A SCHOLARSHIP RECIPIENT (OR RECEIVING AN ANNUAL ALLOWANCE) DURING THE YEAR?

You can obtain a refund of your registration fees (depending on your institution) and your CVEC.

**Ask your central registrar's office and visit [cvec.etudiant.gouv.fr](https://cvec.etudiant.gouv.fr)**

5

*You can make an appointment with a social worker from CROUS or UHA via the platform [mesrdv.etudiant.gouv.fr](https://mesrdv.etudiant.gouv.fr) by selecting "CROUS de Strasbourg" and "service social." The link is available directly via the QR code at the end of the booklet.*

# BECAUSE IT'S NOT NORMAL TO BE IN IN THE **RED** EVERY MONTH.

## MOBILITY ASSISTANCE

**Parcoursup:** if you received a scholarship in high school and changed school districts for your first year because of Parcoursup, you are entitled to €500.

**Monmaster:** for the first year of your master's degree, if you are a scholarship recipient and you change academic regions, you are entitled to €1,000.

→ Information here: [messervices.etudiant.gouv.fr](https://messervices.etudiant.gouv.fr) under the heading "aide à la mobilité parcoursup" (mobility assistance for Parcoursup) or "aide à la mobilité master" (mobility assistance for master's degrees)

## (NON-)SCHOLARSHIP RECIPIENT AND STILL PRECARIOUS?

### THE €1 MEAL:

Assistance is available to all students in precarious situations (including those who do not receive scholarships). You can enjoy up to two meals per day in the university restaurants, cafeterias, and CROUS&Go locations available on the Grillenbreit campus.

The procedures must be completed on the [epa.lescrous.fr](https://epa.lescrous.fr) platform or with a social worker. If you have a regional Health & Social Sciences scholarship, you must send your scholarship notification to CROUS in order to benefit from the €1 rate.



### SPECIFIC ONE-TIME ASSISTANCE

It is available to all students under the age of 35 (no age limit for students with recognized disabilities) regardless of nationality. This is a form of assistance, the amount of which may vary, to help you in the event of temporary difficulties (housing, equipment, study materials, etc.). It is paid in a single installment.

**The procedure must be carried out with a social worker from CROUS or UHA.**

### REIMBURSEMENT OF REGISTRATION FEES

You can apply for a refund/exemption from your UHA registration fees at the start of the academic year between September and November 2025 from the exemption committee, for the 2025-2026 academic year.

**The procedures must be carried out with a social worker.**

### ARE YOU AN EMPLOYEE, WORK-STUDY STUDENT, OR INTERN WHO NEEDS ASSISTANCE WITH LABOR LAW?

If you encounter difficulties, abuse of power, harassment, or simply have questions about labor law, don't hesitate to contact a local professional union:



#### MULHOUSE

adresse : 4 rue du pommier  
tél : 09 83 85 01 63  
mail : [cgt.mulhouse@wanadoo.fr](mailto:cgt.mulhouse@wanadoo.fr)



#### COLMAR

adresse : 13 rue Turenne  
tél : 03 89 41 28 79  
mail : [cgt.colmar@calixo.net](mailto:cgt.colmar@calixo.net)



#### HÔTELLERIE-TOURISME RESTAURATION

tél : 07 69 75 90 62  
mail : [hcr68cgt@gmail.com](mailto:hcr68cgt@gmail.com)



*We regularly organize food and basic necessities distributions, with no strings attached.*

*Remember to follow us on social media and fill out the form accessible via the QR code on the back of the booklet to sign up for distributions and/or the newsletter.*



# CAMPUS GRILLENBREIT

## SERVICES ÉTUDIANTS

**BVE** - Bureau de la vie étudiante (vie étudiante  
p.10 / étudiant-es internationaux P.4)

**SSE** - Service de santé étudiante (P.11)

Psychologue (P.11)

Mission Handicap (p.11)

**SIO** - Service d'information et d'orientation  
(p.4)

Service social (p.5-6)

Dépôt solidaire

**BAT I**

**Learning CENTER**

Bibliothèque universitaire  
Salle de sieste - espace jeu de société  
- salle de travail en groupe

**BAT**

**A**

UHA Business School

Secrétariat département HSE  
Amicale HSE Amphi 024 - 227



Pas besoin d'être  
dans une filière  
pour utiliser les  
micro-ondes du  
bâtiment



**BAT F**

Secrétariat Département RT

Amicale RT

Amphi 014



**BAT G**

Secrétariat département CJ et TC

Amicale CJ et TC

Amphi 034



R01

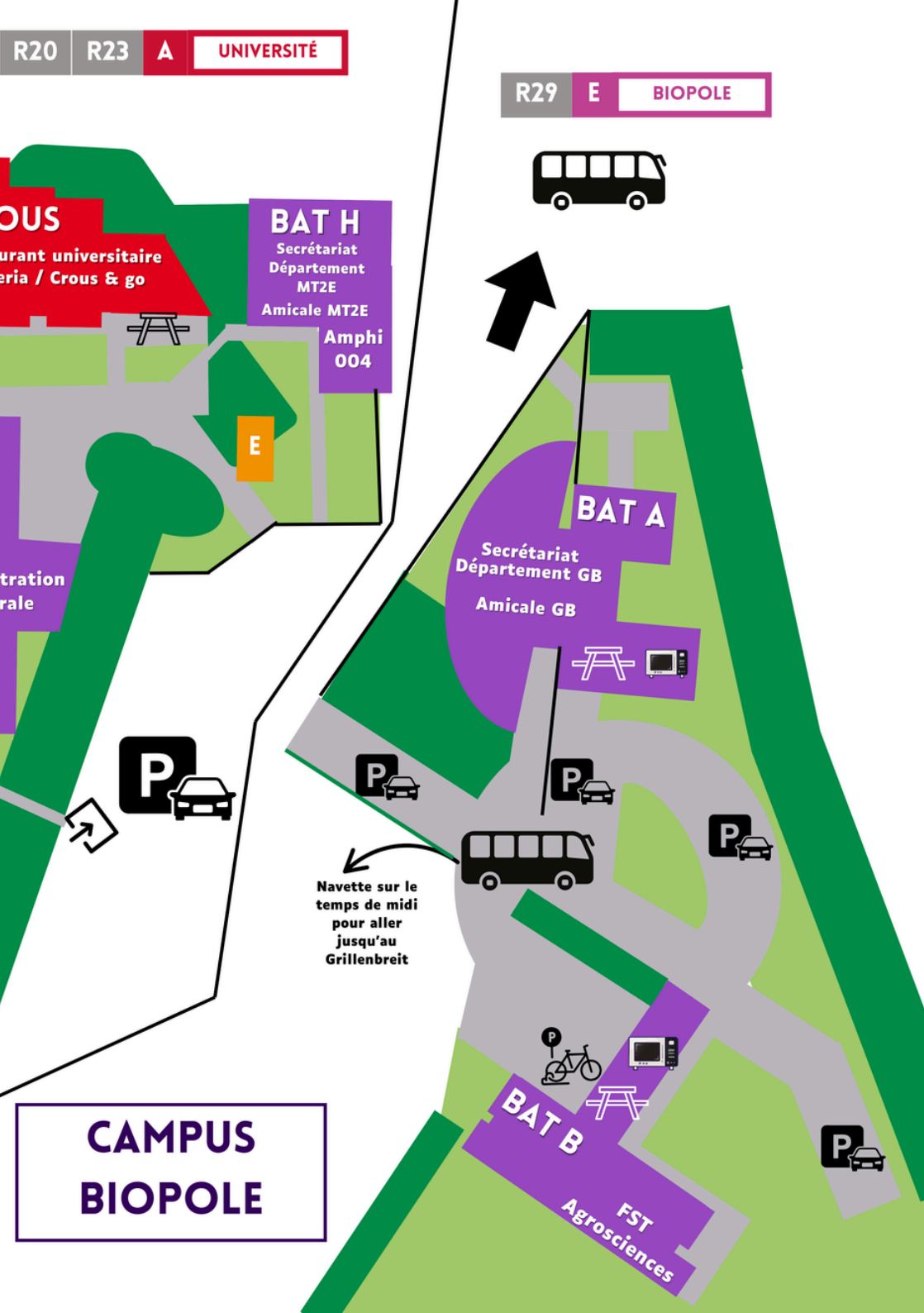
**GRILLENBREIT**



**J**  
**CR**  
Resta  
Cafét

**BAT**  
**C**

Adminis  
géné



R20 R23 A UNIVERSITÉ

R29 E BIOPOLE

OUS

urant universitaire  
eria / Crous & go

BAT H

Secrétariat  
Département  
MT2E  
Amicale MT2E

Amphi  
004

E

tration  
rale

BAT A

Secrétariat  
Département GB  
Amicale GB

P



P



P



P



Navette sur le  
temps de midi  
pour aller  
jusqu'au  
Grillenbreit



BAT B



P



CAMPUS  
BIOPOLE

FST  
Agrosciences

# HELP WITH YOUR HOUSING

Decent housing is **ESSENTIAL** to succeed in your studies

## LOWERING THE RENT

### PERSONALIZED HOUSING ASSISTANCE (APL)

Personalized Housing Assistance is a benefit provided by the Family Allowance Fund (CAF) and available to all students to help pay your rent when you no longer live with your parents, regardless of your parents' financial situation.

**To submit an application (and simulate the amount you may be entitled to), log on to the CAF website: [caf.fr](https://caf.fr)**

### VISALE DEPOSIT

The VISALE deposit is a form of assistance managed by Action Logement (financed and run by companies) that can advance you the security deposit for your accommodation and act as your guarantor.

**You can apply at [visale.fr](https://visale.fr).**

### MOBILI-JEUNE: HOUSING ASSISTANCE FOR WORK-STUDY STUDENTS

This is a subsidy managed by Action Logement for students in work-study programs in the private sector to help finance housing. The amount of the subsidy ranges from €10 to €100 per month.

**You must submit your application every year at [mobilijeune.actionlogement.fr](https://mobilijeune.actionlogement.fr).**

### HAVING TROUBLE WITH YOUR HOUSING? LE DAL

Le Droit Au Logement (DAL) is an association dedicated to defending the fundamental right to housing for all, particularly for people in precarious situations, such as students. DAL supports students in precarious situations by helping them deal with threats of eviction, assisting them in finding decent and affordable housing, and guiding them through administrative and legal procedures.

**[droitaulogement@dal68.fr](mailto:droitaulogement@dal68.fr)**

## HOUSING IN COLMAR

Unlike Mulhouse, Colmar does not have any CROUS accommodation.

There are five student residences in Colmar:

- **La Ruche**
- **Le Molière**
- **Le Home des infirmières**
- **Le Surf**
- **Le Foyer Pasteur**



# CULTURE, SPORTS, STUDENT LIFE

To have a student **LIFE** outside of class

## ENJOY WITHOUT BREAKING THE BANK

### CULTURE CARD

It is free for students who have paid the CVEC (or have been exempted), particularly in the form of a student card (UHA/Unistra/Hear), or costs €7 for other students.

It entitles holders to reduced rates for shows, festivals, cinema tickets at €4 in Cernay (Espace Grün) and Thann (Relais Culturel Pierre Schiélé) and at the CGR Colmar for screenings by the Association Lézard, and at €3 in Mulhouse (Cinéma Bel Air and on Mondays and Thursdays at the Palace), as well as free admission to 26 museums in Alsace.

**More information on the [carte-culture.org](https://carte-culture.org) website.**

If you encounter any problems, you can contact the UHA SUAC service by email at [culture@uha.fr](mailto:culture@uha.fr).

### STUDENT LIFE OFFICE (BVE)

The BVE supports student associations, organizes off-campus outings (Christmas market, go-karting, etc.) and on-campus events (open-air café, costume parties). Stay up to date on Instagram: [@bve.uha](https://www.instagram.com/bve.uha).

### THE CLOUS / CROUS OF STRASBOURG

Among its many other missions, CLOUS offers free activities open to all students, not just those from the university. These include laser tag nights, cooking workshops, and ice skating evenings. Their Instagram: [@vie\\_etudiante\\_68](https://www.instagram.com/vie_etudiante_68).

### SPORTS PASS

This is a €70 subsidy in the form of a QR code for the payment of a sports club membership or a subscription to certain gyms, for students under the age of 28 who receive a grant (for higher education or health & social care) or annual assistance from the CROUS, and must be used before December 31, 2025.

If you are eligible, you will receive the Pass Sport by email or text message. If you are eligible but have not received it, you can apply for it at [pass.sports.gouv.fr](https://pass.sports.gouv.fr) before October 15.

### SUAPS (SPORTS DEPARTMENT)

You can practice sports for free at UHA through open courses/modules, open enrollment (IUT, etc.), or personal practice (you must bring your own equipment).

For more information: [suaps@uha.fr](mailto:suaps@uha.fr) or the university gym on the Grillenbreit Campus/Multifunction Room.

### JEUN'EST

A scheme run by the Grand Est region for young people up to the age of 29, this virtual card offers discounts and training courses (first aid, foreign languages, Voltaire project, etc.).

**Information and registration are available on the website [jeunest.fr](https://jeunest.fr).**

**52%**

Students have already given up going out/leisure activities  
(Source: COP1 2023)

# HEALTH AT UNIVERSITY

## KNOW WHO TO TURN TO

### DISABILITY, YOU ARE ENTITLED TO ACCOMMODATIONS

Do you have a disability or health issue (temporary or permanent)? Contact Mission Handicap to benefit from study and/or exam accommodations tailored to your needs (extra time, note-taking, etc.).

Send an email to [accueilhandicap@uha.fr](mailto:accueilhandicap@uha.fr) / on site: Building B, Grillenbreit Campus

You do not need to be recognized by the MDPH to receive accommodations (only your medical file is required). This can also be done with Mission Handicap in several steps:

1. Appointment with Mission Handicap
2. Appointment with the Health Service to determine the best form of accommodation
3. Communication with the administration for implementation

Once the decision has been made, it must be implemented without question and without the need to explain the reasons to the teaching staff if you do not wish to do so. If this is not the case, please contact us.

### SUMPPS (OR SSE): HEALTH SERVICE

**34%** *Students have already foregone healthcare for financial reasons.*

This is the University Student Health Service, where you will find:

- 1 general practitioner: Monday and Friday mornings
- 1 nurse: [isabelle.turquier@uha.fr](mailto:isabelle.turquier@uha.fr) / 03 89 20 23 44
- 1 social worker on Tuesday mornings
- 1 psychologist on Tuesday and Thursday mornings, by appointment: [alexis.boehrer@uha.fr](mailto:alexis.boehrer@uha.fr)
- 1 dietitian
- 1 psychiatrist

You can benefit from:

- Nursing care, listening, advice on contraception, screening, general consultation, etc.
- Medical examination for new students arriving from Campus France
- Consultation with a psychologist, psychiatrist, or dietitian
- Directory of medical specialists according to specific needs
- Free condoms and pregnancy tests available

**To make an appointment: contact the nurse by email.**

Student Union, Grillenbreit Campus, Building B, 1st floor

### MENSTRUAL LEAVE: OUR RIGHTS!

*Students in work-study programs or continuing education programs, who are subject to labor law, are at the mercy of the company they come from.*

After a long battle for equality, we have succeeded in getting menstrual leave approved for all menstruating people at the university in CFVU. There will be 20 half-days of justified absences without the need for a medical certificate, excluding scheduled exams and tests. This leave is a right that cannot be denied under these conditions.

If you are a victim or witness of gender-based violence, sexual violence, and/or harassment (VSSH) or discrimination related to your studies, you can file an internal report with UHA, accompanied by a form, to the dedicated support unit: [signalement.violences@uha.fr](mailto:signalement.violences@uha.fr)

For more information, see our book Guide to Combating Discrimination and VSS.



# HEALTH yes... health comes at a PRICE

## REDUCE HEALTHCARE COSTS

**36 %** *Students are psychological distress.*

### MENTAL HEALTH DEVICE (OR MENTAL HEALTH VOUCHER)

Since July 2024, you can benefit from 12 free sessions per academic year with a psychologist approved by the Santé Psy program (previously 8 sessions).

You can check your eligibility on the Santé Psy Étudiant website using your INE number and consult the directory of psychologists for in-person or teleconsultation appointments.

### SOCIAL SECURITY

Social security allows you to be reimbursed for part of your healthcare costs (general practitioner, dentist, prescription drugs, etc.).

You are automatically enrolled, either through your parents or individually (possible from the age of 16).

For international students, this is not automatic. You must:

1. Register at <https://etudiant-etranger.ameli.fr/>
2. Submit supporting documents (ID card, residence permit, proof of enrollment in school, etc.)
3. Obtain your social security number
4. Fill out a form to receive your health insurance card

**16 %** *Students are foregoing dental care due to lack of funds.*

### SUPPLEMENTARY HEALTH INSURANCE (MUTUAL INSURANCE)

It covers the remaining social security costs, meaning you don't have to pay anything for certain healthcare expenses. There are several options available, so make sure you choose one that covers your needs (general expenses, optical, dental, etc.).

### AND IF YOU CAN'T AFFORD IT, THERE'S THE COMPLÉMENTAIRE SANTÉ SOLIDAIRE (CSS) HEALTH INSURANCE SCHEME:

For all students, it supplements health insurance reimbursements and, depending on income, means that you pay little or nothing for general medical consultations, reusable sanitary protection, and certain dental, hearing, and vision care. Applications must be made with your household or individually if you have a tax return separate from your parents, receive annual assistance from CROUS, or have one or more children, at [complementaire-sante-solidaire.gouv.fr](http://complementaire-sante-solidaire.gouv.fr).

### SEXUAL HEALTH

For contraception and abortion prescriptions, there are centers in Haut-Rhin that can help you free of charge:

[planning-familial.org/fr/le-planning-familial-du-haut-rhin-68/les-centres-ivg-et-contraception-373](http://planning-familial.org/fr/le-planning-familial-du-haut-rhin-68/les-centres-ivg-et-contraception-373)

STI/HIV screening: see CeGIDD and AIDES in Haut-Rhin

*If you are under 26, you can get free condoms (male or female) without a prescription at a pharmacy. You will need to present a health insurance card, a European Health Insurance Card, or an AME card (Aide médicale d'Etat, which allows undocumented immigrants to access healthcare). You can also find free morning-after pills at pharmacies without a prescription.*



# UNIVERSITY EDUCATION

## ATTENDANCE

Attendance is mandatory for all classes (lectures, tutorials, practicals) and exams. Unexcused absences may result in failure and, for scholarship recipients, the loss or obligation to repay the scholarship (4 absences from class or 1 absence from an exam).

Justification for absences:

- Bachelor's, Master's, Professional Bachelor's: 5 working days (48 hours for work-study students)
- BUT: 48 hours
- If your absence is justified, you can take a substitute exam. Contact your teacher as soon as possible to arrange this.
- Valid justifications are as follows:
  - Illness with proof
  - Death of a close relative
  - Military and administrative obligations
  - Recognized religious holiday (ministerial circular)
  - Maternity/paternity leave
  - Strike or transportation incident
  - Painful periods (20 half-days per year, form available via the QR code on the back). The latter is not valid for work-study students or for scheduled exams and tests.
- If this leave is not respected, send us a message.

Orange and red alerts related to bad weather (bachelor's, professional bachelor's, and master's degrees only)

The reasons for absence are valid within the university.

If you are a work-study student, these reasons may not be valid with your company.

## DISCIPLINARY COMMITTEES

You may be referred to a disciplinary committee, for example in cases of fraud or cheating. At the time of the incident, you may refuse to sign the official report if you disagree with it, and you are entitled to complete your exam. Only the disciplinary committee can decide on sanctions. Until it has reached a decision, your transcript and diploma will be withheld. However, the school is required to provide you with a provisional transcript or a provisional diploma certificate (if you should have obtained your diploma) if you request it. You may be accompanied by a person of your choice throughout the proceedings.

The CSTE can accompany you to defend you.

## FREE EU / OPEN MODULES

Open modules are mandatory for all undergraduate students and in certain master's programs (check your curriculum). Open modules are additional courses that may include sports, languages, artistic activities, or professional training. Places are limited, so it is advisable to look into them before the selection process begins. Some subjects are semester-long, others are year-long; be sure to choose according to your availability.

For "sports" modules, registration is first done with the instructor at the beginning of the course (starting September 2), using the SUAPS registration form (available at the gym and downloadable from [suaps.uha.fr](https://suaps.uha.fr)). Validation on the open subjects website is then only possible with the teacher's approval.

**(You must complete 50 hours for the year or you will lose points in sports.)**

If you are registered with an outside club, this number of hours is reduced, as is the case if you participate in SUAPS activities.

Registration periods for open modules/free EU:

- S1 subjects (or annual subjects): from September 15, 2025 (starting at 9 a.m.) to October 10, 2025 (11:59 p.m.).

**The website is listed on the back of this booklet.**

*The RSE allows students with special circumstances (employment, disability, commitments, etc.) to benefit from study accommodations. Each request is evaluated individually and formalized in an educational success contract. For more information, contact your registrar's office or visit the UHA website.*

# UNIVERSITY EDUCATION

Within the UHA, there is a variety of systems relating to courses. With two IUTs (university technology institutes), two engineering schools, and four faculties, several educational frameworks coexist within our institution, and sometimes even within the different programs of the same department. To understand how your program works, be sure to consult the M3C (Modalities for Assessing Knowledge and Skills), which define the rules and specific functioning of your program.

**UE - Teaching Unit:** a coherent set of several ECUE grouped around a single theme (e.g., "Methodological Tools"). The UE average is calculated based on the ECUE grades.

**BCC - Knowledge and Skills Block:** used mainly in BUT or master's programs, the BCC groups together several ECTS or activities that enable the assessment of specific skills (e.g., "Communicating in a professional context"). Not all programs have a BCC.

## VALIDATION RULES

**BUT : Teaching Units (TUs)** are earned if the average between the "resources" and "SAÉ" sections is at least 10/20, or by compensating between TUs of the same level and the same skill. Attendance is mandatory. Progression to an even semester (S2, S4, etc.) is automatic, while progression to an odd semester (S3, S5, etc.) is conditional on obtaining an average in more than half of the EU groups, with at least 8/20 in each. Semester 5 can only be started if the EUs for S1 and S2 have been validated.

**Bachelor's/Master's/Professional Bachelor's:** a course unit or BCC is validated if the average of its components is at least 10/20, or by compensation between course units of the same BCC, or between BCCs of the same title (the lower level is then automatically acquired). If the program does not include a BCC, the course units of a semester can compensate each other. A semester is validated if all its ECTS credits/BCCs are acquired, or if the average of the ECTS credits reaches 10/20 (minimum 8/20 per semester in the case of annual compensation in M1). Certain ECTS credits, such as internships or dissertations, may be excluded from compensation.

## RETAKE / SECOND SESSION

In the event of failure, a resit session may be offered. This is mandatory for bachelor's degree programs that include final exams. It may also be offered for bachelor's degree programs that use continuous assessment or for master's degree programs. For bachelor's degrees, only the higher of the two marks from the first and second sessions is retained. There are no resits for BUT degrees.

## REPEATING A YEAR

If a year is not validated, you have the option to repeat it under the following conditions:

**BUT:** upon decision of the jury, maximum 1 time per semester, maximum 4 times during the program

**Bachelor's degree:** it is a right, 2 per year and 5 per program. No need to go through Parcoursup again.

**Master's degree:** for M1, it is a right once; for M2, it is a right if the internship has not been completed, maximum once, otherwise it is up to the jury to decide.

- Professional bachelor's degree: upon decision of the jury.

**IF YOU HAVE ANY QUESTIONS, PLEASE DON'T HESITATE TO CONTACT US.**

# POUR RETROUVER PLUS D'INFORMATIONS :

## FLASH LE QR CODE

PLAN DE CAMPUS, RDV ASSISTANTE SOCIALE, CROUS&GO', ADHÉRER À LA CSTE  
(ET PLEIN D'AUTRES INFOS TOUT LE LONG DE L'ANNÉE)

**THIS BOOKLET IS AVAILABLE IN ENGLISH**

**CHECK IT OUT BY SCANNING THE QR CODE BELOW OR ON OUR WEBSITE**



**POUR NE RATER AUCUNE INFO IMPORTANTE SUR LES COURS,  
LES EXAMENS ET LA VIE ÉTUDIANTE (CULTURE, SORTIES),  
SUIS NOUS SUR NOS RÉSEAUX SOCIAUX !**

Dessins par Amandine Jeker @kamueshi\_art

Pour nous joindre : [contact@cste68.fr](mailto:contact@cste68.fr)

Présidente, Manon Denizot : **07 86 79 38 51**

Vice-président, Thibault Delgrande : **06 38 13 06 88**

La CSTE est un syndicat étudiant indépendant de tout établissement d'enseignement supérieur, y compris de l'Université de Haute-Alsace (UHA). L'exactitude et la fiabilité des informations contenues dans ce livret relèvent exclusivement de sa responsabilité.



**CSTE\_68**



**CSTE68.FR**